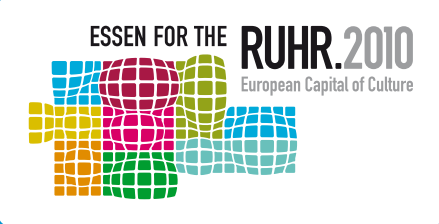


The place
where
anything
goes.

RUHR.2010
Save the date!
Experience the European Capital of Culture.





Can you spare just a year of your time?

Wherever you are, call off your holiday, cancel all the dates in your calendar, pack your bags and join us here! Who cares whether you're in London, Berlin or New York? Just head for the European Capital of Culture. Above all travel throughout the Capital of Culture. Best of all, both. Then you'll really have a ball! In 2010 and, if you want, right now! In no less than 53 towns and cities.

RUHR.2010 is the title of the European Capital of Culture in the Ruhr Metropolis. Do you want to know where that is? You won't find it on any map and no sat nav system will help you either. No wonder. For the Ruhr Metropolis is a new kind of city in the making. And it is being made now! The European Capital of Culture RUHR.2010 is making its entry onto Europe's stage as a newcomer, and that's a great reason to celebrate – with you!

Now we're going to tell you the most important dates to look forward to. Whatever you do, don't miss them.

Prepare yourself for adventures, large and small, in this unconventional metropolis. You name it, we've got it! From street art to art exhibitions, theatre to computer games, opera to industrial heritage, football or a family party. Here you can find out what life is really like in the Ruhr: simultaneously attractive and unsightly, with corner bars and gourmet restaurants, allotment gardens and landscape parks, comedy shows and classical concerts all right next to one another.

Maybe you live here already – but do you really know what's going on everywhere? If not, we'll show you what you can discover just around the corner.

Why not try something new and completely different in 2010? Forget the night life in Zurich and lose yourself in the party atmosphere of the pubs, bars and discos in the Bermuda Triangle in Bochum. Forget that hiking holiday in the Black Forest and try climbing our man-made mountains and landscaped spoil tips. And why not take your family and friends to a "Still-Life" picnic on the motorway instead of a day in a fun park? Who wants to stand in a queue for the Eiffel Tower when they can climb to the top of a blast furnace and gaze in awe at the new face of the Ruhr? You'll be amazed!

Welcome to the European Capital of Culture RUHR.2010. You've never seen a metropolis like this in your life!

Table of Contents

ORIENTATION	2	PARTY TIME	15	EXPERIENCE ART	28
		Extra Shift	15	The Emscher Landscape Park	28
THE FINER SIDE OF LIFE	4	Still-Life A 40	16	Emscher Art	29
Folkwang Museum	4	The Loveparade	17	The Culture Canal	29
"The most beautiful Museum of the World"	5	Living Games	17	Shaft Signs	31
Pictures of a Metropolis	5	!SING – DAY OF SONG	18	Biennale for International Light Art	32
A Star is Born	6	MELEZ	18	Light RUHR.2010	32
MKM Küppersmühle	8	National Poetry Slam	19	Twilights / Ruhrlights	33
Emil Schumacher Museum	9			The Ruhr Atoll	34
AufRuhr 1225!	10	DATES	20		
HEROES	10	ALL THE RUHR'S A STAGE	22	HIGHPOINTS	36
Ruhr Museum	11	Theater der Welt 2010	22	USEFUL INFORMATION	38
OLD SYNAGOGUE	12	Odyssey Europe	23		
State Archive of North Rhine-Westphalia	12	Theatre Quarter Ruhr	24	ADDRESSES	39
Mosque in Marxloh	13	!SING Symphony of a Thousand	25	CREDITS/SPONSORS	40
Dortmund U	13	Zeitinsel Fazil Say	25		
		The Henze-Project	26		

A town has suburbs, a metropolis has areas.

A voyage of discovery in the Ruhr Metropolis is always an adventure. That said, we want to make your adventure as comfortable and easy to experience as possible. For this reason we have split the region into five areas. From 2010 onwards there will be five visitor centres at hand to provide you with the basic information on the surrounding area along with all the added extras

like programme information, tickets, accommodation and restaurant tips, not forgetting transport information, roads and routes. The visitor centres will be situated in the cities of Duisburg, Oberhausen, Essen, Bochum and Dortmund. Here you can be assured of a warm welcome and plenty of useful information on how to travel the area in comfort.

The Ruhr – spectacular and popular

Oberhausen could be the start of a wonderful (industrial) romance for you. The city and the surrounding area are packed with plenty of popular attractions ranging from shopping and entertainment in the CentrO, via the immensely popular Oberhausen Gasometer and the International Short Film Festival, all the way to the castles and mansions in the Lippe-Region to the north of the Ruhr Metropolis. Christo and Jeanne-Claude were here already. When are you coming?

The Ruhr festival centre

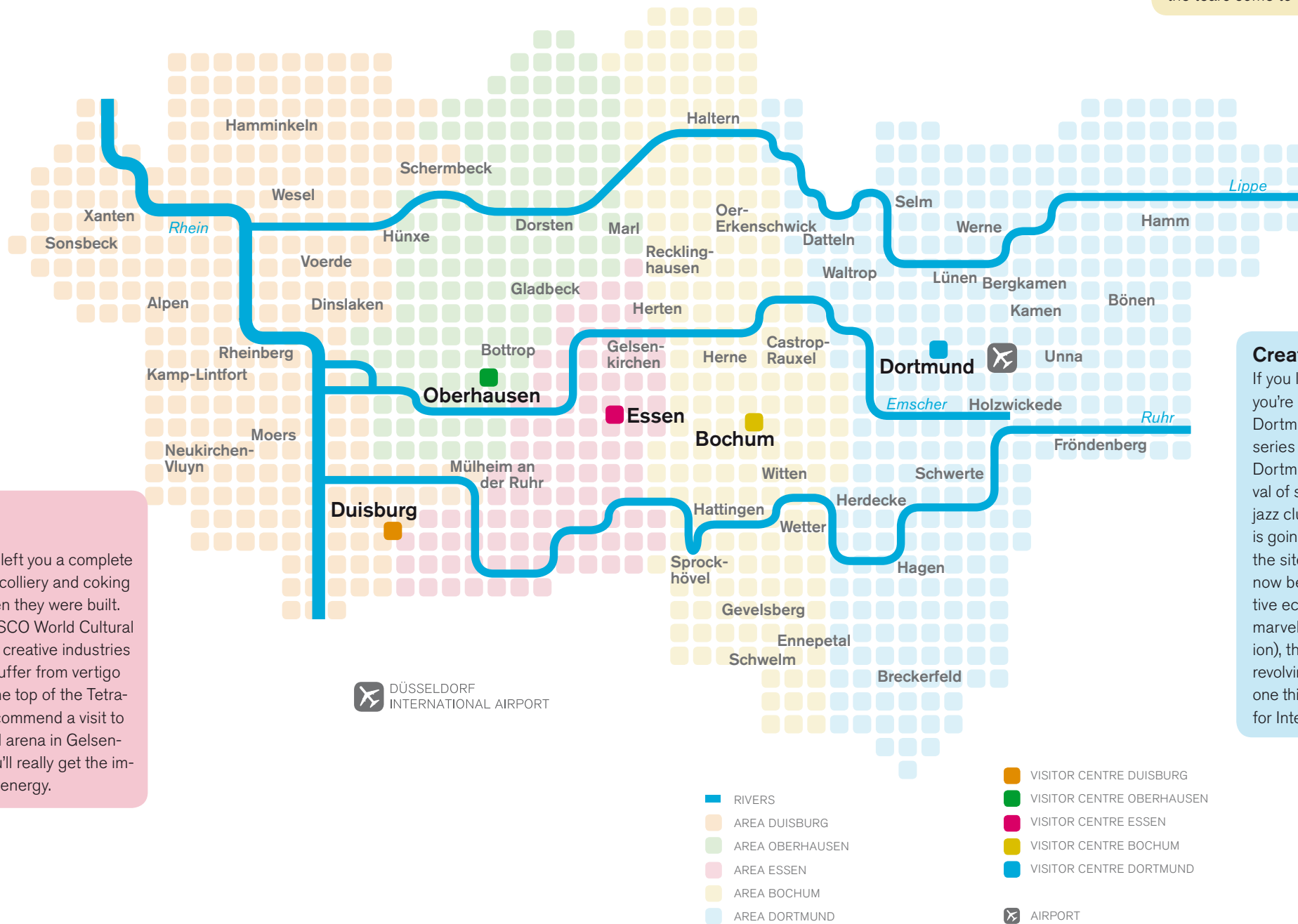
Provided you don't get lost amongst the bars and restaurants in the legendary Bermuda Triangle in Bochum, you can't fail to notice the amount of theatre festivals going on in the area: everything from the Bochum Playhouse to the Ruhrtriennale, the International Puppet Theatre Festival and the Bochum Comedy Theatre, all the way to the oldest theatre festival in the region, the Ruhrfestspiele in Recklinghausen. A song about Bochum goes: "You may not be a beauty, but at least you're an honest soul..." and audience sing their hearts out until the tears come to their eyes – because it's true.

The Culture Capital Harbour

Where Rhine and Ruhr meet a new cultural metropolis is being created. The Duisburg area will be ready to welcome you with its unique, redeveloped Inner Harbour designed by the star architect Norman Foster as the "Culture Capital Harbour". Here between the Rhine, the Ruhr and the River Lippe you can experience the immense contrast between industrial heritage and the large untouched areas of surrounding countryside. So bring your boat and tie up in the largest inland port in Europe!

World Cultural Heritage – art and creativity in the Ruhr

It's a great thing to know that someone's left you a complete heritage of world culture. The Zollverein colliery and coking plant in Essen were high-class sites when they were built. Now they have both been listed as UNESCO World Cultural Heritage sites, and are packed with new creative industries and design venues. Provided you don't suffer from vertigo you can risk a view over the Ruhr from the top of the Tetrahedron in Bottrop. Otherwise we can recommend a visit to a Schalke match in the VELTINS football arena in Gelsenkirchen. When the fans begin to sing you'll really get the impression: Unlike coal this is a renewable energy.



The strength of our museums comes from our weakness for art.



Folkwang Museum

Thanks to the generosity of the Alfried Krupp von Bohlen und Halbach-Foundation, the most famous art museum in the region is getting a new palatial building right on time for the Capital of Culture year.

The top London architect, David Chipperfield, has designed a luminescent building with inner courtyards, gardens and galleries. The entrance area facing the main road towards the city centre will be an eye catcher in itself. A large staircase and an open inner courtyard protected from the street by a glass façade will provide a feeling of utter transparency. The café, the restaurant and the museum bookstore will all remain open outside normal opening hours. The new exhibition rooms will offer plenty of space for the painting and sculpture collections, graphic arts and photography, not forgetting the



The new building for the Folkwang Museum
Design: David Chipperfield Architects

German Poster Museum. The Folkwang Museum will be opening in January 2010, to present three major exhibitions during the Capital of Culture year.

Museum Folkwang, Essen
Opens January 2010
Prob. Tue – Sun 10 – 20.00
€ 3,50 – 12 €
Rüttenscheider Stern
Accessibility icon

“The most beautiful Museum of the World” The Folkwang Museum until 1933

This is “the most beautiful museum of the world” said Paul J. Sachs, the co-founder of the Museum of Modern Art in New York, on his return to New York from a visit to the Folkwang Museum in 1932. The Nazis brutally interrupted the progressive policy of the Folkwang Museum and in 1937 they confiscated more than 1400 works which were later legally sold and can now be seen amongst the masterpieces in major museums and private collections all over the world: paintings by Kandinsky and Matisse, Kirchner and Marc, Munch and Beckmann. The first major special exhibition will feature a reconstruction of the spectacular collection of art as it was in 1933. The Folkwang Museum is one of the region’s success stories. Karl Ernst Osthaus used his wealth to promote up-and-coming artists, and in 1902 he set up the first

public museum of modern art in Germany, the Folkwang Museum in Hagen. After he died the collection moved to Essen and the Folkwang Museum rapidly gained a worldwide reputation. In 2010 you can once again experience the Folkwang Museum as a “heavenly sign in the west of Germany”, as it was described by Emil Nolde

Partner: E.ON Ruhrgas

Museum Folkwang, Essen
20 March – 25 July 2010



Paul Signac “The Seine near Saint-Cloud” (1900)
Copyright: Museum Folkwang

Pictures of a Metropolis The Impressionists in Paris

Europe’s first major metropolis was Paris. In the 19th century the city was regarded as the capital of the modern world. The artists who lived here between 1865 and 1995 took the city as a source of inspiration. Indeed this was the first time that the city itself became a central theme for artists.

In October 2010 the metropolis of Paris will be paying its respects to the new Ruhr Metropolis in the form of a major exhibition on Paris at the time of the Impressionists, a major city in a whirl of transformation. The Folkwang Museum will be taking you on a stroll through Paris as it was in the works of world-famous impressionist artists like Manet, Pissaro, Monet and Degas. The journey will begin with a view over the city, followed by a walk through the streets, over bridges, through parks and cafes and along the

River Seine into the suburbs to finish in the centre of Paris nightlife. Alongside presenting the stars of the age, the exhibition will be showing other works by important contemporary artists and fascinating works by less well-known masters. In addition contemporary photographs will give visitors an impression of the city from a completely different point of view. So why not take a stroll through Paris in 2010, not along the banks of the Seine, but in the Ruhr Metropolis?

Partner: E.ON Ruhrgas

Museum Folkwang, Essen
2 October 2010 –
30 January 2011



"Elvis Presley in back of a taxi, Richmond, Virginia 1956"
Photo: Alfred Wertheimer

A Star is Born

Photography and rock since Elvis Presley

Do you fancy taking a taxi with Elvis Presley? Or meeting up again with Prince and Jimi Hendrix? Seeing the Rolling Stones at their first live concert? From July to October 2010 you'll be able to meet the rock stars and top photographers of the last 60 years in the Folkwang Museum. Rock photography is all about stars – on both sides of the camera. Great photographers have been responsible for building up the myths of international stars like Little Richard, Frank Zappa, David Bowie and the Beatles, all the way to German stars like Nina Hagen and the Arctic Monkeys. Behind the camera stand the likes of Ron Galella, Annie Leibovitz, David Bailey, Richard Avedon and Anton Corbijn, all of them world-class photographers in their own right. All in all, an exciting mixture of art and commerce.

Museum Folkwang, Essen
2 July – 10 October 2010



Frank Zappa, Photo: Jürgen Heinemann

250 exhibits comprising photographs, record covers, magazines and autograph cards, glamour portraits, press reports of live concerts, PR material from the studios, and photos of instruments and sound techniques will be awaiting you at the first major exhibition of its type in Germany. Who knows who you might come across...?

Partner: RWE AG



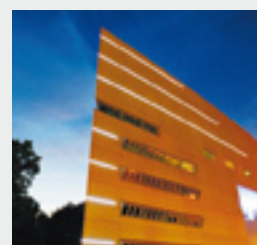
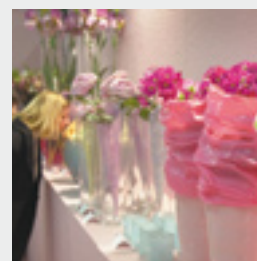
Art window „Energie“ by Jörg Immendorff in the Galeria of MESSE ESSEN

Welcome to the fair venue Essen

Successful fairs, good business – you're at the right place here.

- 50 trade fairs and exhibitions
- 13 leading international fairs
- 13,000 exhibitors
- about 1.5 million visitors from about 140 countries

www.messe-essen.de



Where the World Inspires You.



11-15 MARCH 2009
WWW.ITB-BERLIN.COM
General Public:
14-15 MARCH 2009



**ITB Berlin Welcomes
RUHR.2010 – the European
Capital of Culture.**

Messe Berlin GmbH · Messedamm 22 · 14055 Berlin · Germany
Tel. +49(0)3038-0 · Fax +49(0)3038-2113
www.itb-berlin.com · itb@messe-berlin.de





Extension to the MKM
Küppersmühle Museum
Design: Herzog & de Meuron

MKM Küppersmühle Museum of Modern Art

How did a corn silo come to be turned into a museum? The answer lies in the Emscher Park International Building Exhibition (1989–1999). Right at the start of the European Capital of Culture 2010 a new and spectacular extension to the Küppersmühle Museum of Modern Art, designed by the star architects Herzog & de Meuron, will be opened to the public. The monumental “container” will seem to hover above the ground at a height of 36 metres. Truly a new item of first-class architecture in the Duisburg Inner Harbour, and a new jewel for the city!

Fans of art and architecture will be delighted. The sensational collection of Sylvia and Ulrich Ströher and the exciting architecture of the Küppersmühle Museum combine to make up a “Gesamtkunstwerk”. The corn silo originally had six stories, but in 1999 the architects

Herzog & de Meuron merged them into three airy levels, with high ceilings and clearly defined spaces. The planned extension will provide further space for the high-class exhibits, and the museum will be able to present twice the amount of works to visitors.

The collection consists of about 1500 works of art and holds a central position in the artist history of Germany from the post-war era to the present day. A huge amount of world-class artists are featured in the collection, including Josef Albers, Georg Baselitz, Joseph Beuys, Candida Höfer, Rebecca Horn, Jörg Immendorff, Anselm Kiefer, Markus Lüpertz and Sigmar Polke.

Partners: Evonik Industries, GEBAG Duisburg, the state of North Rhine-Westphalia, Sammlung Ströher, Stiftung für Kunst und Kultur e.V. Bonn

MKM Museum Küppersmühle
für Moderne Kunst, Duisburg
Wed 14–18.00,
Thur 11–18.00,
Fri by arrangement only,
Saturdays, Sundays and
public holidays: 11–18.00
€ 4–8 €, children and
school students free
of charge
H Hansegracht
W Wheelchair accessible

Emil Schumacher Museum

Hagen, the home town of the most important artist in the region, Emil Schumacher (1912–1999), has built a new museum in his honour. Schumacher, who was not only a painter but also a graphic artist, was one of the most important representatives of informal painting in Germany. His work was shot through with an idiosyncratic and spectacular imagery which had an immense influence on later generations of painters. The Emil Schumacher Museum is scheduled to open on the 28th August 2009.

The Emil Schumacher Museum, designed by Lindemann Architects, shares its new foyer with the entrance to the Karl Ernst Osthaus Museum next door. Its aim is to present a multifaceted programme of exhibitions dedicated to the expressionist school of painting from 1945 to the present day. The museum can draw on over 400 works from the collection of the Schumacher foundation and covers all the artist's stages of development. Emil Schumacher, who was presented with the Guggenheim award in 1958, (alongside many other national and international prizes) has finally been given his own museum.



Emil Schumacher "Paseo" (1999)
Copyright: Emil Schumacher Foundation Hagen

Emil Schumacher Museum,
Hagen

Opens 28 August 2009

For current information on
prices and opening hours:
www.esmh.de

Sparkassen-Karree/
Stadtmitte



AufRuhr 1225!

Knights, castles and intrigues

Welcome to the Ruhr in the 13th century! The Archaeology Museum in Herne will be presenting the largest mediaeval exhibition to have been presented in the last few decades. "AufRuhr" tells how a murder in 1225 transformed the face of the whole Ruhr region. Exciting large-scale installations reveal why a local aristocrat lured one of the most powerful men in the kingdom into a deadly trap, and why this was followed by a boom in the building of new fortresses along the rivers Rhine and Ruhr. The story of Archbishop Engelbert of Cologne and his rival Friedrich von Isenberg is a tale of murder and feuds, victories and defeats, robber barons and nobles. All walks of life are shown here and there are plenty of hands-on exhibits to enable visitors to get a palpable idea of life in the Middle Ages. The exhibition will include a programme of outside events staged in the castles and fortresses of the region. Anyone visiting this exhibition will get a completely new view of the Ruhr!

LWL-Museum für Archäologie, Herne
27 Feb – 28 Nov 2010
Tue, Wed, Fri 9–17.00,
Thur 9–19.00, Sat, Sun and public holidays 11–18.00
€ 4–6 €/group concessions
Archäologie-Museum/ Kreuzkirche
♿

Partners: Landschaftsverband Westfalen-Lippe (LWL), LWL-Museum für Archäologie Westfälisches Landesmuseum in Herne



Photo: LWL Archaeology Museum, Herne

HEROES

Our yearning for the exceptional

From Hercules to World Cup heroes, fire-fighters to film stars. Every society has its heroes. They are ideal figures, role-models on whom to pin our hopes and dreams. The exhibition goes in search of heroes and hero-worship – from the great classical and mediaeval heroes to present-day computer heroes. It illuminates the cult and myths surrounding great national and international heroes, tells of war and resistance heroes, not forgetting stars from the worlds of sport and entertainment. In its search for local heroes, the exhibition itself takes place in a mythical venue: the Henrichshütte works in

Hattingen, where workers laboured for 150 years to produce iron and steel. Other sites in the LWL industrial museum will also be presenting exhibitions and events on the theme.

Partners: Landschaftsverband Westfalen-Lippe (LWL), LWL-Industriemuseum Westfälisches Landesmuseum für Industriekultur

LWL-Industriemuseum
Henrichshütte, Hattingen
12 March – 31 October 2010
Mon–Sun 10–18.00
www.helden-ausstellung.de
€ 4–6 €/group concessions
Industriemuseum/ Henrichshütte
♿



Ruhr Museum
Photo: Manfred Vollmer

Ruhr Museum

The new Ruhr Museum is housed in the former coal washing plant on the site of the Zollverein colliery. Just like the coal many years before, visitors are first transported up to the 24 metre level before being led down to the floors below. Starting in August 2009 the history of the Ruhr Metropolis will be brought to life on the very site where coal was once processed.

The permanent exhibition tells the history of the region from the present day, via the age of coal and steel all way back to prehistoric times and back again to the Ruhr Metropolis. No matter whether you get your kicks from immersing yourself in prehistoric times or take pleasure in the collection of personal objects which often reveal the most amazing stories of life in the Ruhr – the

impressive spaces in the museum make an unforgettable impression on children and adults alike.

In 2010 the museum will be taking a look beyond the immediate borders of the Ruhr with a temporary exhibition on archaeology and politics in the age of colonialism. What drove Sven Hedin, Lawrence of Arabia, Gertrude Bell and Carl Humann from Essen to set out on exhausting and potentially deadly exhibitions in search of ancient cultures and their treasures?

Ruhr Museum, Essen
Opens Autumn 2009
Temporary exhibition:
12 February–13 June 2010
Probably daily 10–18.00
€ 7 €, children under 6 free, children and young people 1 €
Zollverein
♿



The OLD SYNAGOGUE, Essen, Design: wbp
Landschaftsarchitekten Ingenieure, Bochum

OLD SYNAGOGUE

Today's ALTE SYNAGOGE (Old Synagogue) in Essen was once the largest synagogue north of the Alps and is one of the most important Jewish cultural monuments in Germany.

The synagogue was the centre of the Jewish community in Essen until 1938. After the war it went through a turbulent period before it was finally restored as a memorial site. One of the most important and oldest buildings in Essen will be given a completely new look for the Capital of Culture year, when it opens its doors once again in April 2010. The new permanent exhibition will be showing all the many facets of Jewish culture, past and present. It shall encourage a dialogue on how majority sections of the population can coexist with cultural minorities. The central exhibit, of course, is the ALTE SYNAGOGE itself. The area outside the synagogue, containing the Catholic "Church of Peace" and the "Century Fountain" will also be redeveloped and named Edmund-Körner-Platz, after the architect of the synagogue.

ALTE SYNAGOGE, Essen

Opens April 2010

Tue – Sun 10–18.00

€ Admission free

H Porscheplatz



State Archive of North Rhine-Westphalia
Design: Ortner & Ortner Baukunst

State Archive of North Rhine-Westphalia

Most people imagine that a State archive must be a very sad and ugly looking building – and at best boring. How wrong can you be! There has never been an archive building in Germany like the new one in Duisburg.

The architect's firm, Ortner & Ortner Baukunst, have taken a 1930s corn silo in the Inner Harbour and given it a 70 metre high redbrick tower extension in the middle. It offers an unbelievable 160.000 square metre storage area for state documents – i.e. 160 kilometres of book shelves. It would take a normal mortal a whole week to cover this! But there are better ways of spending your time in the Ruhr Metropolis ...

Partners: the city of Duisburg,
the state of North Rhine-Westphalia

Landesarchiv Nordrhein-Westfalen, Duisburg

H Innenhafen



The DITIB-Merkez
Mosque, Duisburg
Photo: Manfred Vollmer

Mosque in Marxloh

The tip of the minaret stretches 34 metres into the heavens above the suburb of Marxloh in Duisburg. The new Byzantine-Ottoman style mosque is a clear statement that yesterday's so-called "guest workers" have now found a permanent new home in Germany. And visitors are very welcome to look around. So why not take a guided tour and admire the fine paintings on the ceiling and the woodcuts in the prayer room?

You can even take part in Friday worship and afterwards enjoy a cup of tea and an oriental meal in the bistro. An adjoining community centre contains a library and an Islamic archive, and offers educational and leisure facilities for migrants as well as a venue where Islamic, Jewish and Christian believers can celebrate their festivities.

DITIB-Merkez Moschee,
Duisburg

Mosque: Mon – Sun 9–20.00

Bistro: Mon – Sun 9–21.00

Guided tours: Mon 13.30,

Wed and Sat 11.00

Groups larger than 10 persons
must book in advance

€ Admission free

H Heckmann



Dortmund U

The emblem of the creative Ruhr Metropolis

The creative class are taking over an old brewery! The first centre for the creative economy in the whole of Germany – main themes: music and the media – will be opening in 2010 on the site of the former Dortmund Union Brewery with its imposing "U" (for Union) perched on the top of the tower. This will surely become an emblem of the transformation that is taking place in the Ruhr Metropolis. It will cover an area of 80.000 square metres and bring together art, education and creativity into a new and powerful synergy. Whatever the case it will be well worth a visit, because the "Museum am Ostwall" will have a new home here in which to present its collection of 20th and 21st



Dortmund U, Photo: Lutz Kampert

century art. The building is a must for architecture fans, for when they enter the tower they will feel as if they are in a cathedral, with a view all way up to the roof of the seven storey building.

Partners: the city of Dortmund, the state of North Rhine-Westphalia, Museum am Ostwall, Hartware MedienKunstVerein

Dortmunder U

Opens May 2010

H Hauptbahnhof



TRING RUHR 2010
Shakespeare, Szymborska and Seamus Heaney...

"Castrop-Rauxel...
a poem"
"Europe...
a poem"

Poetry in the streets
Poet-trees in the park

Local hero week
4.-11. July 2010
www.castrop-rauxel.de

Castrop-Rauxel
Europastadt im Grünen

Where
the stars
are reachable

Landscapepark Hoheward
with sky observatory
in the heart of the Metropole Ruhr

HyBikeHerten, T. 00492366 - 181 160, www.hybikeherten.de
www.herten.de - www.ricklinghausen.de

Gossens Reisen
Their specialist for group arrangements!

Comfortably and comfortably,
Comfortably, Luxuriously:

In our comfort coaches you enjoy coach travelling in an absolutely new dimension. Thus travelling becomes the experience. Exclusivity on wheels - already from the external appearance. And it has it in herself. Comfort from head to foot. The equipment offers everything what belongs to real travel pleasure. In the supercomfortable sleeping armchairs you sit calmly from first up to the last minute. With a lot of freedom of movement. No question that in our coaches everything is aboard what does the travelling for the pleasure. Chill drinks from the bar. Tasty dishes from the board kitchen. A hygienic WC with wash basin contributes of course also to the well-being on the way. Also here: an equipment of the finest. Experience many advantages of our coaches. Whether for 8 or 58 persons - her 3-and 4-star quality guarantees a comfort, in any case, for you

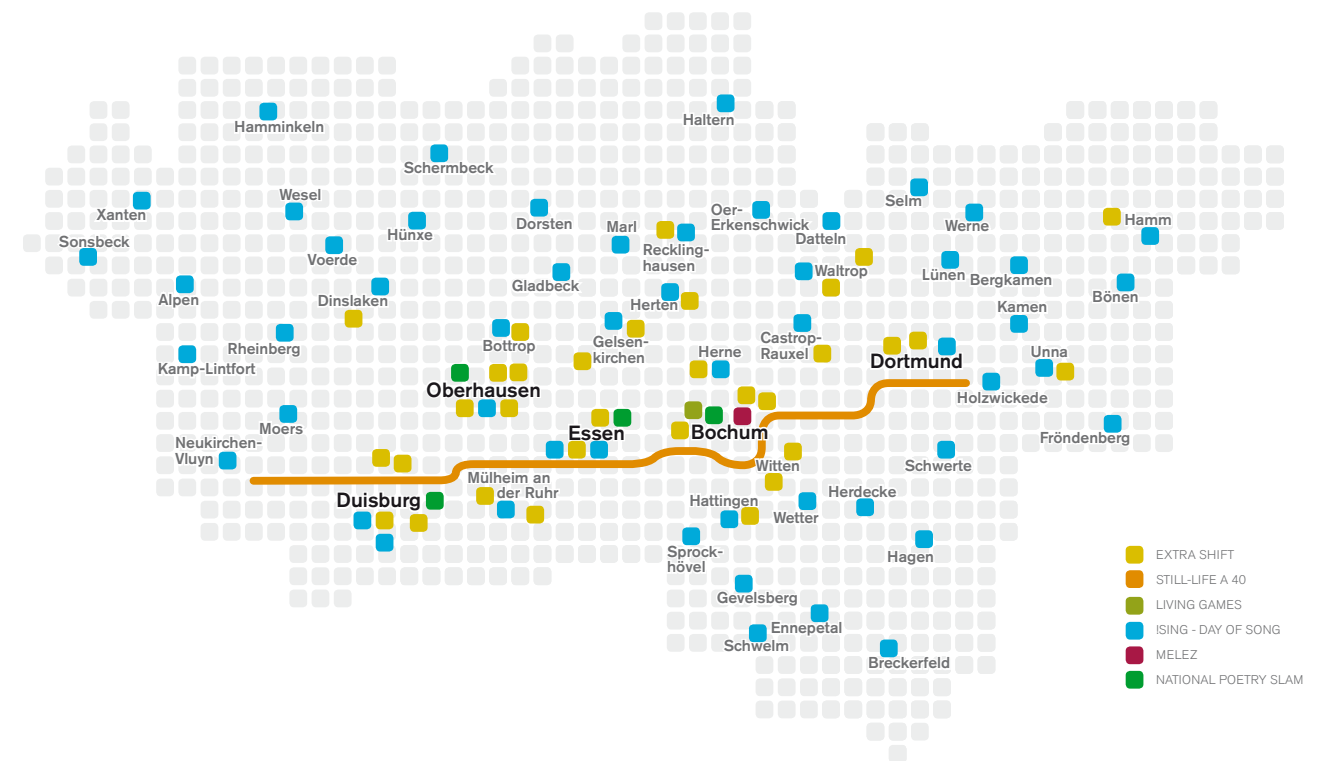
Certificated quality for your security

Gossens Reisen GmbH
Steeler Strasse 319
D- 45138 Essen
Fon: +49/201/2805-55
Fax: +49/201/2805-521

...and you can count on us!

PARTY TIME

Here you can dance through the night.
365 times a year.

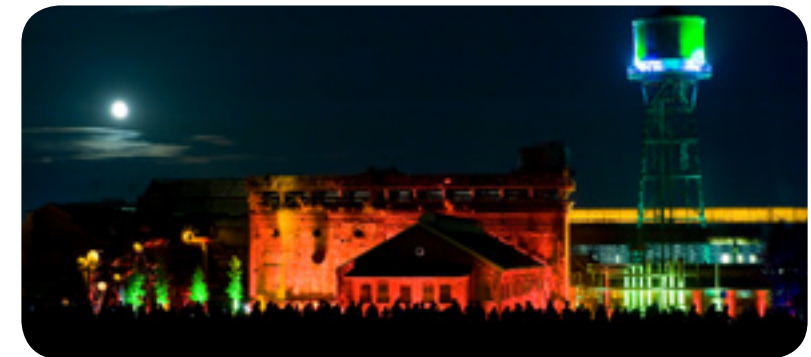


Extra Shift

We shall be delighted to put in an extra shift just for you! This gigantic spectacle has nothing to do with an extra nightshift, unless of course you want to visit 40 venues in 20 towns all at once. If so you'll have to sweat your way through this warm "Midsummer Night's Dream", just like the steelworkers once did in the blast furnaces.

We shall be turning one of the shortest nights of the year into the longest cultural party of the year, when the legacies of the coal and steel industry will be presenting a programme of extravagant, exotic, comic and cult events to would-be night owls on the 27th June 2009 and 19th June 2010.

Extra Shift (German: ExtraSchicht) will be presenting the old industrial sites in the Ruhr



Jahrhunderthalle Bochum, "ExtraSchicht"
Photo: RTG/Christian Nieling

in a completely new nightlight. Doors will be opened which were formerly shut and things lit up which were in the dark. Don't miss it!

Partner: Ruhr Tourismus GmbH

Ruhr Metropolis
27 June 2009 and
19 June 2010 18.00-2.00
www.extraschicht.de
€ 10-16 €
incl. public transport

Still-Life A 40

The metropolis celebrates



Graphics: TAS Emotional Marketing GmbH

What have 30.000 tables, Turkish pizza, Westphalian curried sausage, Russian borscht and the A 40 motorway in common? The 18th of July 2010.

On this day the traffic will not be standing back to back in the usual motorway jams. It won't be there at all! Because the road will be packed with people having a party.

The A 40 is being turned into a unique stage for schools and kindergartens, sports clubs and church communities, choirs, Catholic boy scouts and Turkish hip-hop dancers. In short all the people whose lives are normally hidden away behind the noise protection walls are coming out onto the street to celebrate the largest and most colourful picnic in Europe. The Ruhr Metropolis will be erecting a 60 km long table along the motorway consisting of 30.000 individual tables, and people from 170 different

nations will be coming together for a joint picnic to celebrate our common regional identity. And if you want to celebrate in a completely different manner, this is your chance. The tables can be booked on the Internet for wedding celebrations, children's birthdays, club excursions and company parties etc.

Partners: All the towns along the A40/B1, Ministerium für Bauen und Verkehr des Landes Nordrhein-Westfalen, Landesbetrieb Straßen.NRW, Technisches Hilfswerk Landesverband NRW, LandesSportBund NRW, Verkehrsverbund Rhein-Ruhr, Allgemeiner Deutscher Fahrrad-Club e.V.

Official logistic partner: Schenker Deutschland AG

A40/B1 motorway
18 July 2010
Probably 11.00 – 17.00
Further information
from Summer 2009 at:
www.ruhr2010.de
€ Admission free
Tables: 25 € per item
♿



Loveparade 2007, Photo: RTG/Ralph Lueger

The Loveparade

People in the Ruhr Metropolis take to the streets for love. And here they are joined by over a million visitors – for the Loveparade, one of the largest open-air music parties in the world. It all began over 20 years ago with a political demonstration when an old Volkswagen bus equipped with a loudspeaker drove along the Berlin Ku'damm and laid the foundation stone for the Loveparade under the slogan, peace and joy. Since it moved to the Ruhr Metropolis the beloved party has attracted even more people onto the streets. Indeed, over 1.6 million visitors turned out for the party in Dortmund in 2008. The Loveparade is the embodiment of the vision behind the Ruhr Metropolis to show the world that we have nothing to learn when it comes to celebrating. The Loveparade puts the whole metropolis in a party mood.

Ruhr Metropolis
Summer 2010
www.loveparade.de
€ Admission free
♿



Photo: Aruba Events GmbH

Living Games

They have names like "Sonic Unleashed", "The Rise of the Argonauts" and "The Chronicles of Spellborn". A lot of computer games are real hits, and it's high time to regard them as part of our culture and talk about quality. The Living Games Festival is not primarily concerned with spectacular effects and colourful graphics, but content. Did you know that the German top hit game "Drakensang" required over 2000 pages of text, story and action? How can authors create an exciting atmosphere? How can characters behave authentically? Are games able to compete with classical media like films, books, plays etc? The festival will examine these and other questions concerning the moral and social aspects of games. A jury will discuss the world's ten most successful games before deciding on the gold-medal and the "Living Games Festival Award". The audience prize, the "Living Games Independent Award" will be given to the most innovative game created by a newcomer. It goes without saying that visitors themselves can try the games selected for the festival. At the very latest after this festival you'll be a fan!

Promoter: Aruba Events GmbH

Partners: the city of Bochum, G.A.M.E. Bundesverband der Entwickler von Computerspielen e.V.

Jahrhunderthalle Bochum
21 – 23 May 2009
End of May 2010
www.living-games.de
€ 7–10 €
♿ Bochumer Verein/
Jahrhunderthalle
♿

!SING – DAY OF SONG

A party without songs is like a football match without goals. !SING – DAY OF SONG is the festival of a million voices. In streets, in parks, in concert halls and opera houses, in department stores, kindergartens, churches, and even a football stadium. Join in when the whole metropolis will be singing on the 5th June 2010. Church bells will give the starting signal at 12 noon, after which the residents and the choirs in the Ruhr Metropolis will join in singing the same song together. The day will offer people the chance to demonstrate their talents. A musical parade of boats will be sailing down the Rhine-Herne canal, karaoke buses will be travelling between towns and shopping malls, and every extra voice will be welcome, from people who normally only sing under the shower to star tenors. The climax of !SING – DAY OF SONG will take place at night in the VELTINS football arena in Gelsenkirchen when the largest choir in the history of German music will be presenting the final concert. More than 65.000 singers from the whole of the Ruhr Metropolis and their twin towns will join forces with the world-famous singer, Bobby McFerrin and other guests for a programme of pop, folk music, classical music and religious chorals. "Don't worry, be happy" – you're a singer!



Bobby McFerrin, Photo: Stewart Cohen

Partners: Arbeitsgemeinschaft Deutscher Chorverbände, Deutscher Chorverband, Chorverband NRW, Cäcilienverbände der Bistümer Essen, Münster und Paderborn, Chöre der Evangelischen Landeskirchen im Rheinland und von Westfalen, Arbeitskreis Musik in der Jugend, Chorakademie Dortmund, Verband Deutscher Konzertchöre, Chöre der Neuausschlachten Kirche, ChorForum Essen, the independent choirs and the choirs from the international twin towns

Ruhr Metropolis
5 June 2010
Final concert: VELTINS-Arena Gelsenkirchen, start: ca. 20.30
€ 5–15 €
VELTINS-Arena
♿

MELEZ

How do we celebrate cultural diversity? We celebrate MELEZ – the Festival of Cultures in a metropolis containing people from over 170 nations. MELEZ is all about opening our minds to intercultural activities, dialogue and mutual respect. The MELEZ.Laboratory, for example, addresses questions like alienation and inequality. The MELEZ.Festival stages international music, dance, theatre, crossover cultures, exhibitions and literature. MELEZ.Fashion and MELEZ.Food will present tastes from all around the world, and MELEZ.Cooperations introduces innovative projects by grassroots intercultural

movements and centres. You too can celebrate with MELEZ and find out what really makes a metropolis buzz: its diversity.

Partners: Jahrhunderthalle Bochum, the city of Bochum, Polnisches Institut Düsseldorf, Schauspiel Essen, Literatürk, Buchmesse Ruhr, pottporus, LWL, Stiftung Jedem Kind ein Instrument, WDR Funkhaus Europa, Hürriyet, Milliyet and others

Ruhr Metropolis
Autumn 2010
www.ruhr2010.de/melez

National Poetry Slam

Quicker, louder, better! A poetry slam is a poetry competition in which the competitors perform their own poems within a given time limit. The audiences are the jury which decides on the winners and losers. The decisive factor is the mixture of text and performance, and a fascinating aspect of the whole show is the direct contact between the authors and the reactions from the audience. The 150 best German slammers will be showing up at Slam2010 to compete for glory and the championship over a period of four days. In 2010 the German language Championships will be taking place for the first time in the Ruhr Metropolis. The planned venues are

local arts centres in Oberhausen, Duisburg and Essen, and the grand finale will be staged in the Hall of the Century in Bochum. Starting in January 2010 you can hear the slammers in unexpected places like buses and trains, department stores and pedestrian precincts. To slam or not to slam – that is not the question!

Partner: GREND-Kulturzentrum

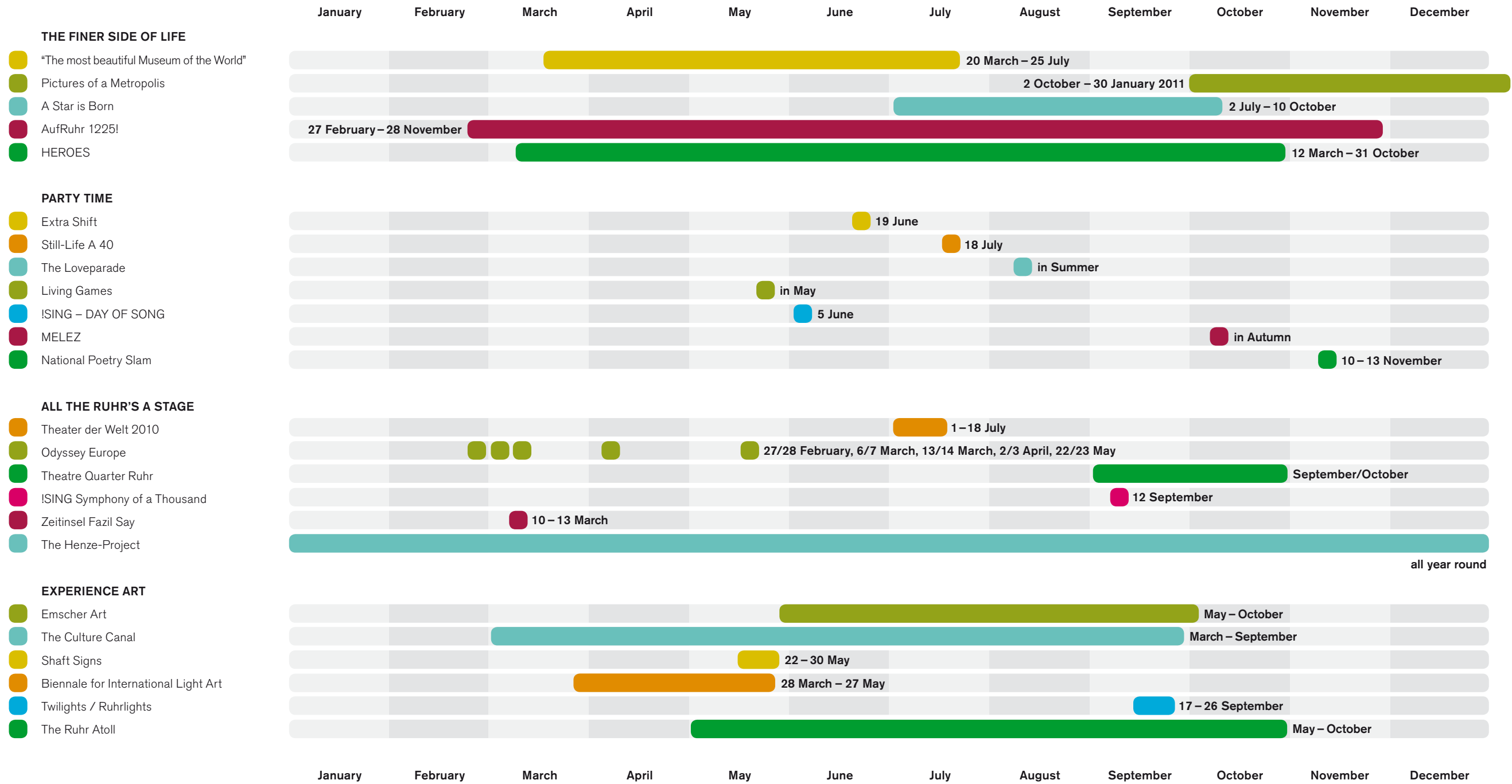
10–13 November 2010
Finals: Jahrhunderthalle Bochum, start: 16.00
Bochumer Verein/
Jahrenderthalle
♿



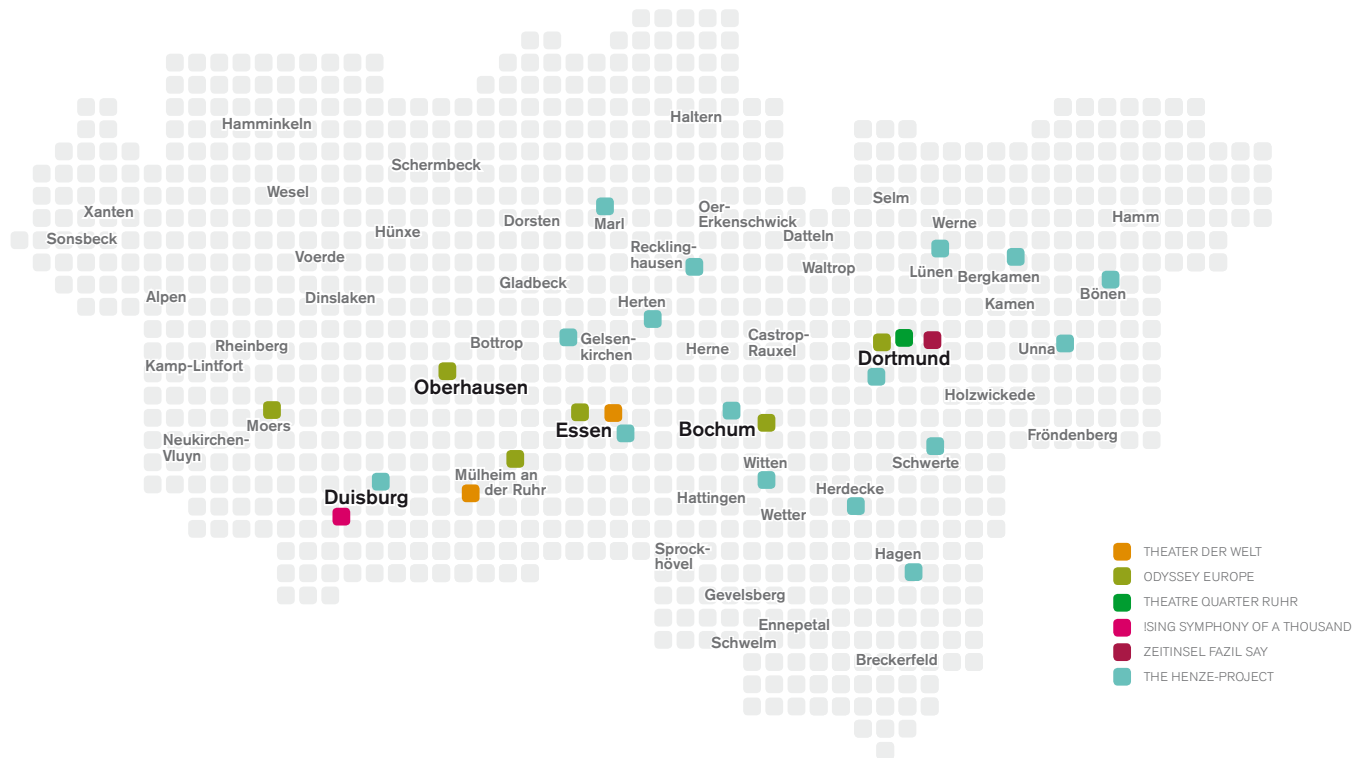
Photo: Florian Knorn

Stories of coexistence
Photo: mauritius images/imagebroker

Save the date: the whole year 2010.



Nothing's an act in the Ruhr Metropolis. That's just the way we are!



Theater der Welt 2010

Pioneering productions, first performances, German and European premieres. This is what the World Theatre Festival is about: the meeting of cultures and confronting the major issues of the 21st century with the universal language of contemporary art. Theatre, dance, film, video, fine arts and performances will stretch the horizons of the Ruhr Metropolis as far as Eastern and Western Europe, Asia, the Orient, Latin America and Africa. If you're looking for contemporary art, new positions, perspectives and panoramas, this is the place for you.

"Theater der Welt" is a flying festival which, in 2010, will be directed by Frie Leysen and take place in Essen and Mülheim an der Ruhr. It usu-

ally takes place every three years but because of the European Capital of Culture, this has been shortened to two. The ITI "Theater der Welt" Festival is Germany's most important international platform for the performing arts.

Partners: International Theatre Institute, Schauspiel Essen, Theater an der Ruhr, Mülheim, Der Beauftragte der Bundesregierung für Kultur und Medien, the state of North Rhine-Westphalia, the city of Mülheim an der Ruhr

Mülheim an der Ruhr
and Essen
1-18 July 2010

Odyssey Europe

Ulysses reaches home after his long wandering and does not recognise his island Ithaca any more. Six of Europe's best-known dramatists will be re-writing one of the most ancient works of literature – Homer's Odyssey. From February 2010 onwards they will lure you into an odyssey through the adventures of the Ruhr under the title "Odyssey Europe". Christoph Ransmayr (Vienna), Roland Schimmelpfennig (Berlin), Emine Sevgi Özdamar (Istanbul), Enda Walsh (London), Péter Nádas (Budapest) and Grzegorz Jarzyna (Warsaw) will be heaving Homer into the present day for you. Six theatres of the Ruhr Metropolis will join forces to stage the six plays. You can be sure of an unforgettable theatrical experience when Ulysses' 10 years journeying through all of Europe will be compressed into a fascinating weekend odyssey through six theatres. The Ruhr Metropolis is the ideal place for a contemporary re-narration of the Odyssey – because this is the place where many of the challenges of our common project called "Europe" have to be dealt with. Previews of this theatrical marathon will put you

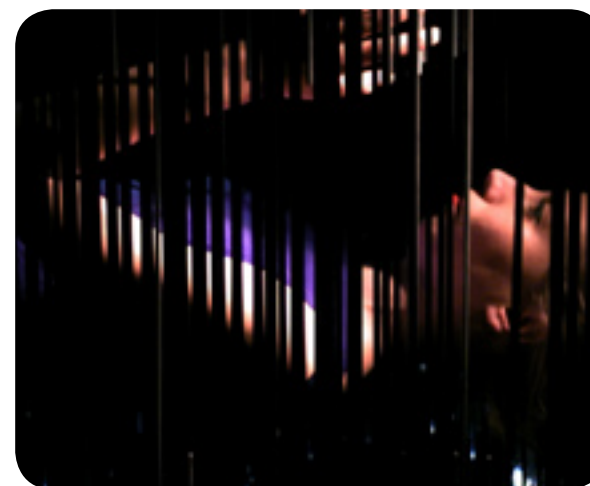


Graphics: raumlaborberlin

in the mood for the theme before the big day arrives, and in March 2009 a Trojan Horse will be placed in the squares outside the participating theatres. Between June 2009 and February 2010 there will be introductory lectures on the Odyssey by philosophers, academics and journalists. You'll be welcome to come on board.

Partners: Schauspielhaus Bochum, Schauspiel Dortmund, Schauspiel Essen, Schlosstheater Moers, Theater an der Ruhr, Mülheim, Theater Oberhausen, raumlaborberlin

Premiere:
27/28 February 2010
Further dates:
6/7 March 2010
13/14 March 2010
2/3 April 2010
22/23 May 2010
A weekend including
accommodation, food,
admission and travel
between the theatres



"Patent Human Energy"
by Kris Verdonck
Photo: Luc Schaltin, 2005



"12 / ...in the left back mirror in the Woolworth's parking lot"
A choreography by VA Wölfel, Photo: VA Wölfel/NEUER TANZ

Theatre Quarter Ruhr

Art needs a free space for innovation, a quarter where new things can be thought up, tried out and, if necessary, thrown out to start again from scratch. The "Theatre Quarter" is such a workshop. It provides artists and fringe groups from NRW and Europe with a base to experiment. In 2010 the resulting productions can be seen at the "favoriten" festival in Dortmund. The festival, formerly known as "Theaterzwang", is the oldest fringe Festival in Germany and in 2010 it will be devoted to the work of a single artist or group for the very first time. The selected artist in 2010 is the Düsseldorf choreographer and pictorial artist VA Wölfel and his company NEUER TANZ with their show, "Thank you for the Sponsoring. Collected Pieces 1985–2010".

The winner of "favoriten 08", Laurent Chétouane will be making a guest appearance in the Capital of Culture Istanbul in 2010 with his dance piece "Images of Heiner Müller" in a joint production with garajistanbul.

Promoters: Verband Freie Darstellende Künste NRW e. V., Kulturbüro Stadt Dortmund

Partners: Staatskanzlei Nordrhein-Westfalen, the city of Dortmund, NRW Landesbüro Freie Kultur, NRW KULTURsekretariat (Wuppertal), Fonds Darstellende Künste e. V., Generalkonsulat der Niederlande, Düsseldorf, Theater Instituut Nederland, Amsterdam, Skulpturenmuseum Glaskasten Marl and others

Different venues in
Dortmund
September/October 2010
€ 5–15 €

ISING

Both the "Symphony of a Thousand" and the DAY OF SONG (see page 18) are a part of ISING to encourage people throughout the region to raise their voice in songs of all types

ISING

Symphony of a Thousand

Some people refer to the work scathingly as "ostentatious cardboard", whereas others worship it as a mighty tonal drama. There's no accounting for taste. Gustav Mahler's gigantic Eighth Symphony is a highly controversial work. Its world premiere took place in 1910 with 858 singers and 171 instrumentalists. No wonder it was called the Symphony of a Thousand. And how good it is that several first-class orchestras and choirs have joined forces to tackle the work once again in the Ruhr Metropolis! On 12th September 2010, exactly to the day one hundred years after its first performance, RUHR.2010 and partner institutions will reconstruct the concert under identical conditions, in a hall without a stage and orchestral pit. The chosen venue in the North Duisburg



Central power station (Kraftzentrale), North Duisburg Landscape Park, Photo: Reinhart Cosaert

Landscape Park is ideal, not least because of its name: the central power station. The Ruhrtriennale season runs between mid-August and mid-October 2010. The programme will be published in spring 2010 simultaneously with the opening of the advance box office.

Partners: Bochumer Symphoniker, Dortmunder Philharmoniker, Duisburger Philharmoniker, Essener Philharmoniker, Neue Philharmonie Westfalen, Philharmonisches Orchester Hagen, Ruhrtriennale, Chorakademie Dortmund, Philharmonischer Chor Bochum, Philharmonischer Chor Essen and others

Kraftzentrale, Landschaftspark
Duisburg-Nord
12 September 2010
Landchaftspark-Nord
Accessibility icon

Zeitinsel Fazil Say

"Fazil Say will be one of the great artists of the 21st century." (Le Figaro)
Fazil Say is a Turkish composer, pianist, jazz musician and world music proponent. His extrovert piano style bridges west and east in a carefree, yet intensive, manner and he has conquered concert halls from his home in Ankara all the way to New York. Since the 2006/07 season Fazil Say has been the exclusive artist-in-residence at the KONZERTHAUS DORTMUND. To round off his period of residence in 2010 the all-round talent will be dedicated a "time island" by the concert house. The first performances of his work the "Istanbul Symphony" are scheduled

to take place between the 10th and 13th March 2010, alongside the German premiere of his violin concerto "1001 Nights in a Harem" with the WDR symphony orchestra from Cologne. He will also be giving a piano recital and an evening entitled "Fazil Say & Friends" with colleagues and DJs from Istanbul, jazz and classical musicians. A guest appearance is also planned in the European Capital of Culture Istanbul 2010.

Partners: KONZERTHAUS DORTMUND, WDR, Istanbul 2010



Fazil Say, Photo: Sonja Werner

KONZERTHAUS
DORTMUND
10–13 March 2010
Reinoldikirche
Accessibility icon



Hans Werner Henze
Photo: Ursula Kaufmann

The Henze-Project

New music for a metropolis

"I always wanted to be with people, directly involved with their lives and not living comfortably on the edge". The music of Hans Werner Henze is just as direct and human. The most outstanding living composer and pioneer of modern music has been responsible for promoting many talents and, by spreading his knowledge, has enabled other people to enter the world of music. During his career he has written for every sort of musical genre in order to present his works to the general public with open arms. This is only too clear when you listen to his music. He shows us how learning and quiet study can be an answer to the flood of impulses and challenges surrounding us.

For the Capital of Culture year 2010 a large number of musical institutions in the region are

joining forces for the first time to present the works of Hans Werner Henze in a network of venues. The programme will cover the whole spectrum of his achievements, from opera, ballet and orchestral works, chamber concerts and a youth Orchestra Festival, to radiopieces, readings and a film retrospective. All his life Hans Werner Henze has laid particular value on reaching young audiences with new music and making it available to large sections of the general public. Henze has been commissioned by RUHR.2010 to write an opera for and with young people. The world premiere will take place in cooperation with the Ruhrtriennale.

Partners: Aalto Ballett Theater Essen, Aalto-Musiktheater, Ballett Dortmund, balletthagen, Ballett Schindowski – Musiktheater im Revier, Bochumer Symphoniker, Casablanca Kino GmbH, Celloherbst am Hellweg, Chorakademie Dortmund, Deutsche Oper am Rhein Düsseldorf/Duisburg, Dortmunder Philharmoniker, Duisburger Philharmoniker, El Cimarrón-Ensemble, Europas junger Klang (Deutscher Musikrat, Landesmusikrat NRW, Landesverband der Musikschulen NRW, Verband der Musikschulen), Essener Philharmoniker, Folkwang Hochschule, integral::festival Recklinghausen, Internationales Chorfestival „a cappella“ Ruhr, Klangvokal Musikfestival Dortmund, Klavier-Festival Ruhr, KONZERTHAUS DORTMUND, NRW KULTURsekretariat (Wuppertal), mommenta Dortmund (Festival for chamber music in private and industrial spaces), Musiktheater Dortmund, Musiktheater im Revier, Neue Philharmonie Westfalen, Philharmonie Essen, philharmonisches orchester hagen, Ruhrtriennale, the city of Gütersloh, theaterhagen oper, Westdeutscher Rundfunk, Wittener Tage für neue Kammermusik

Performances all year round in all the above-named institutions
World premiere during the Ruhrtriennale
August–October 2010



*Travel is more than just A to B.
Travel should life your spirits.*



First row of cultural experience

At Hilton Dortmund you are located in the centre of the cultural capital of North Rhine Westphalia – the perfect starting point for trips throughout the Ruhr Area. A spacious spa and fitness area for your recreation or workout plus the famous Hilton Breakfast are awaiting you.

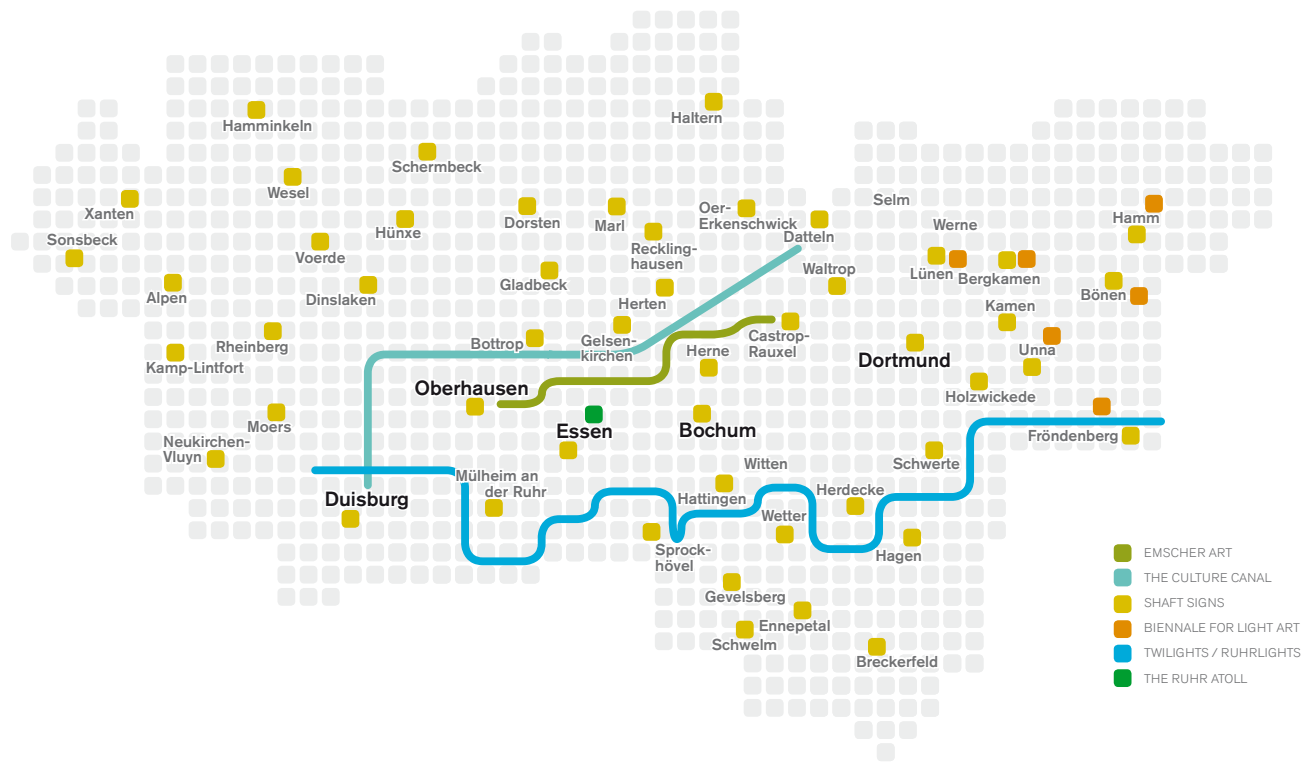
Fall in love with the warmth, hospitality, vitality and cosmopolitanism of the Ruhr Metropolitan Area – always our culture capital.

Please book at our reservation office.
Simone Dahm, phone: +49 231 1086-665 and
Nina Messingsfeld, phone: +49 231 1086-669 are awaiting your call!
Or book online: hilton.com/dortmund



Travel should take you places™

Opening hours: As long as the sun is shining... Or the moon.



The Emscher Landscape Park

There is something different about parks in the Ruhr. The Emscher Landscape Park is as large as Lake Constance and divided by a motorway, a busy waterway, the Rhine-Herne canal, and the Emscher River, which is really a sewer. If someone now tried to convince you that the Emscher Island is a place with palm trees and white sandy beaches... you probably would not believe him. Right you are!

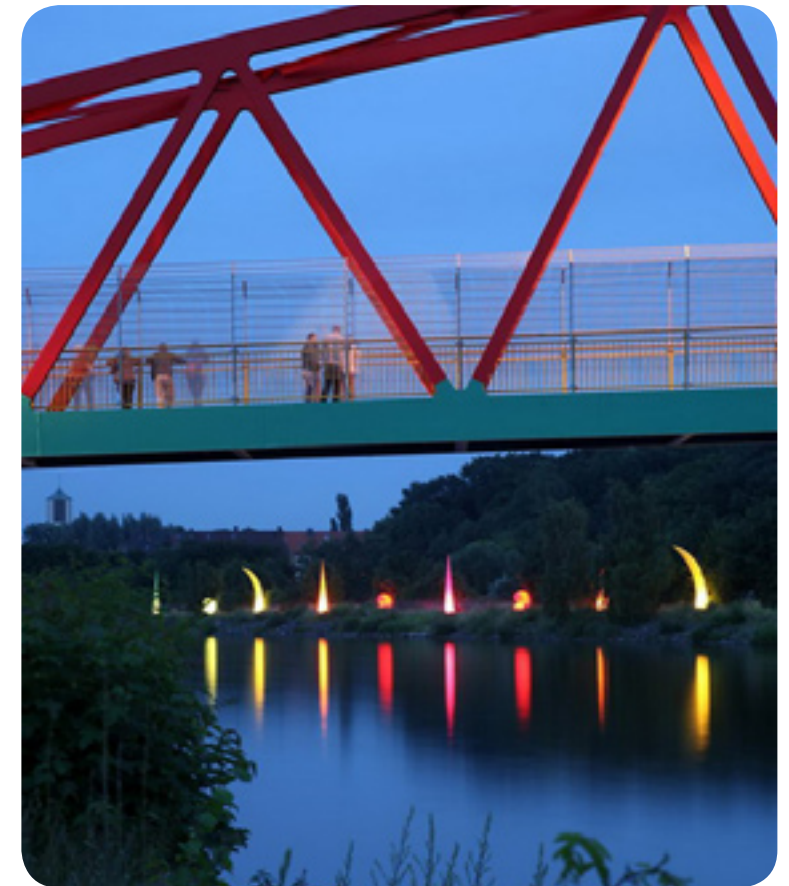
It may not be more beautiful here, but it's definitely more exciting. In 2010 a motorway will be turned into a landscape project entitled the "Park motorway", and the Rhine-Herne canal will be linking ten different towns with a joint art project, whilst the River Emscher is being turned into a natural, clean river again in the largest project of its kind in the world.

Emscher Art

Do you need a long break on a desert island? Emscher Art is an art exhibition on the Emscher Island in summer 2010, featuring 24 internationally well-known artists who have been invited to respond to the contradictions between nature and industry in a landscape full of clarification plants and bridges, disused sites and locks. But this is about art, not politics or urban planning. The idea is to give you a sharper impression of the transformation which is taking place throughout the whole region – and also, of course, to present you with an enjoyable open-air exhibition.

Partners: Emschergenossenschaft, Regionalverband Ruhr, the state of North Rhine-Westphalia, towns along the river

12 venues along the Emscher Island
Probably May–October 2010
€ Admission free



Bridge over the Rhine-Herne canal, Photo: Thomas Robbin

The Culture Canal

After your visit to the Emscher Island why not go on board and take a boat trip on the Culture Canal? The town of Herne and ten other towns from Duisburg to Datteln will be transforming the Rhine-Herne canal into a Culture Canal every month with a variety of different themes. Once on board visitors can enjoy concerts, sketches, readings, films, parties and other live performances, including a gigantic horn concert using ships horns and sirens, an artistic guiding system along the canal, illuminations, open-air films, picnic areas and last not least a parade of boats packed with singers on the 5th of June during ISING – DAY OF SONG.

Rhein-Herne-Kanal
Prob. Mar–Sept 2010
€ Admission free



MARINARÜNTHE
WESTFÄLISCHES SPORTBOOTZENTRUM

Discover North-Rhine Westphalia's biggest Sport Boat Centre in Bergkamen!

The Westphalian Sport Boat Centre in the Rünthe Marina at Hafenweg in Bergkamen offers guests Mediterranean flair in the east of the Metropolitan Ruhr Area. You can sit and daydream on the various restaurant viewing terraces and stay overnight in a maritime atmosphere. Go for a stroll past 310 yachts along the beautiful promenade or set off on a round trip excursion on the Datteln-Hamm Canal. Take wonderful and recreational walks through natural woodland in the Beversee Nature Park right next to the marina or follow the Romans by bike on the well-known cycle route „The Roman Route“.

Harbour Festival
05.-07.06.2009
04.-06.06.2010

Stadt Bergkamen
Economic Development and City Marketing
phone: +49 (0) 2307 965-229 · www.bergkamen.de · e-mail: stadtmarketing@bergkamen.de

...natürlich
BERGKAMEN



Photo/Graphics: RUHR.2010

Shaft Signs

In other places you can see the sunrise. Here you can also see balloons rise. Hundreds of yellow balloons will be marking the spots where coalmines used to stand, but which have now disappeared for ever. Sometimes you can come across a shaft cover with the names of collieries like Hibernia and Consolidation, Teutoburgia and Constantin: names that sound as if they might have come from another planet. Coalmining might have left its mark on the landscape but the mines are scarcely visible any more. This industry was once the centre of life for hundreds of thousands of people, and now it has disappeared below ground once again. The "Shaft Signs" intend to make many of the

900 or so collieries in the region visible once again by flying several hundred balloons into the sky to a height of 80 metres. Each balloon will have its own story and patron to tell that story in words or music. One of them might even be you or your neighbour. For two whole weeks the mining sites will once again move into the spotlight, and all 53 local authority areas in the region will be contributing their own building block to the story. Everyone is invited to take responsibility for the balloons, from history societies to towns, villages mining officers, historians and private individuals.

Promoted by the Commerzbank Foundation

Ruhr Metropolis
22–30 May 2010
www.ruhr2010.de/
schachtzeichen

€ Admission free



mülheim's museum mile

■ multifarious ■ distinctive ■ fascinating ■ entertaining!

- Art Museum „Alte Post“
- Aquarius Watermuseum
- Camera Obscura with the Museum „Prehistory of film“
- Ruhr Nature House
- Leather- and Tannermuseum
- Saarn Cloister and Museum
- Historical Museum Castle Broich
- Local Museum „Tersteegenhaus“
- Bureau Museum in the town hall
- Founders and entrepreneurs Museum
- Historical Classroom

www.muelheim-ruhr.de

Mülheim an der Ruhr
Stadt am Fluss
www.muelheim-ruhr.de

Mülheim an die Ruhr

Biennale for International Light Art

open light in private spaces

Utterly private art. In 2010 the world's first Biennale for International Light Art under the motto "open light in private spaces" will be staged by internationally renowned artists in private houses. Here you will have the opportunity of getting to know residents in the region and combining this with a unique artistic experience. The light artists involved include Christian Boltanski and Jenny Holzer, Rosemarie Trockel and Pipilotti Rist, Dan Flavin and Olafur Eliasson. Climb aboard the shuttle buses and travel from house to house in six different towns. Travelling light indeed!

Partners: Kunststiftung NRW, Zentrum für Internationale Lichtkunst Unna, the state of North Rhine-Westphalia

Private houses in the towns of Lünen, Bergkamen, Unna, Fröndenberg, Bönen and Hamm
28 March – 27 May 2010
10–18.00
www.biennale-lichtkunst.de
€ 15 €



bit.fall (2001–2005), Artist/Photo: Julius Popp

Light RUHR.2010

When it's dark, it's light. At first sight this might seem physically impossible, but it precisely describes the atmosphere at night when the Ruhr Metropolis lights up. This is the most important landscape of light in the whole of Europe. It consists not only of the world's most unique museum for light art, the Centre for International Light Art in Unna, but also a series of permanent public illuminations by major artists at places like the Zollverein coking plant and the North Duisburg Landscape Park (illuminations by Jonathan Park), not forgetting

Dan Flavin's work in the "Wissenschaftspark Rheinelbe" and many other permanent works throughout the whole of the Ruhr Metropolis. In 2010 we are packaging the virtual platform "Light RUHR. 2010" with all the different open-air light art installations in the region to help you find your way along the illuminated trails by night. Who said that everything looks grey by night?

Partners: the cities of the Ruhr Metropolis, Zentrum für Internationale Lichtkunst Unna



Keith Sonnier: Tunnel of Tears, Photo: Werner J. Hannappel



Ruhrlights 2008, Mülheim an der Ruhr: Xavier de Richemont: Tour du Temps
Photo: Rainer Schlaumann

Twilights / Ruhrlights

2010 is the right time to put the River Ruhr into the correct perspective. And because water and light make up a very special combination, the biennial Festival "Twilights / Ruhrlights" will be lighting up the waterways with artistic installations. Suddenly everything will be seen in a new light: familiar objects will look strange, and things that you had never noticed before will pop up right before your eyes. Everyday objects, overlooked and long forgotten features will take on a fresh shape. As part of the TWINS2010 project, the European Capital of Culture 2009, Vilnius, in Lithuania will be illuminating the rivers Vilnia and Neris. The world can be transformed when things suddenly appear in a fresh light.

Partners: the cities of Mülheim an der Ruhr, Duisburg and Oberhausen, Ruhrtalinitiative

Along the River Ruhr
Prob. 17–26 September 2010
€ Admission free



„Iceberg PALAOA“, Andreas Kaiser (Artist),
Lars Kindermann (Physicist)

The Ruhr Atoll

A yearning for the Caribbean is no grounds for itchy feet in 2010. You don't need an ocean to be able to visit the Ruhr Atoll on Lake Baldeney in Essen. Art islands will be created here by well-known artists, and visitors will be able to rent a pedal boat to travel the uncharted waters. The motto behind the project is "Art is Energy – Energy is Movement", and that will become all too clear once you climb into your pedal boat. The archipelago of art and science invites visitors to think more about the relationship between creative and physical energy, and regenerative

resources like water, wind, sun and, of course, creativity. Forget the South Sea and try a cruise on Lake Baldeney in a pedal boat. That will be a real adventure.

Partner: Ruhr-Atoll GmbH
Project sponsor: RWE AG

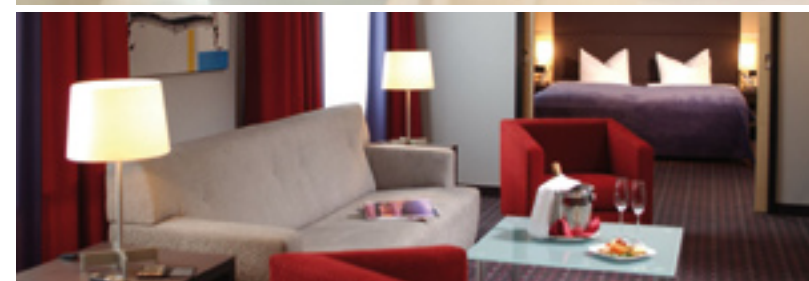
Baldeneysee/Ruhr, Essen
May – end of October 2010
www.ruhr2010.de/ruhr-atoll

€ Pedal boat rental:
10 €/per day

YOUR PERMANENT RESIDENCE IN EUROPE'S CULTURAL CAPITAL 2010

Important landmarks, literature readings and concerts: in 2010, the heartbeat of European art and culture will be pulsing in Essen. Discover the metropolis on the Ruhr River and its many sights, and then relax in the WELCOME HOTEL ESSEN. Now that's vacation for body, mind and soul!

Design & Atmosphere



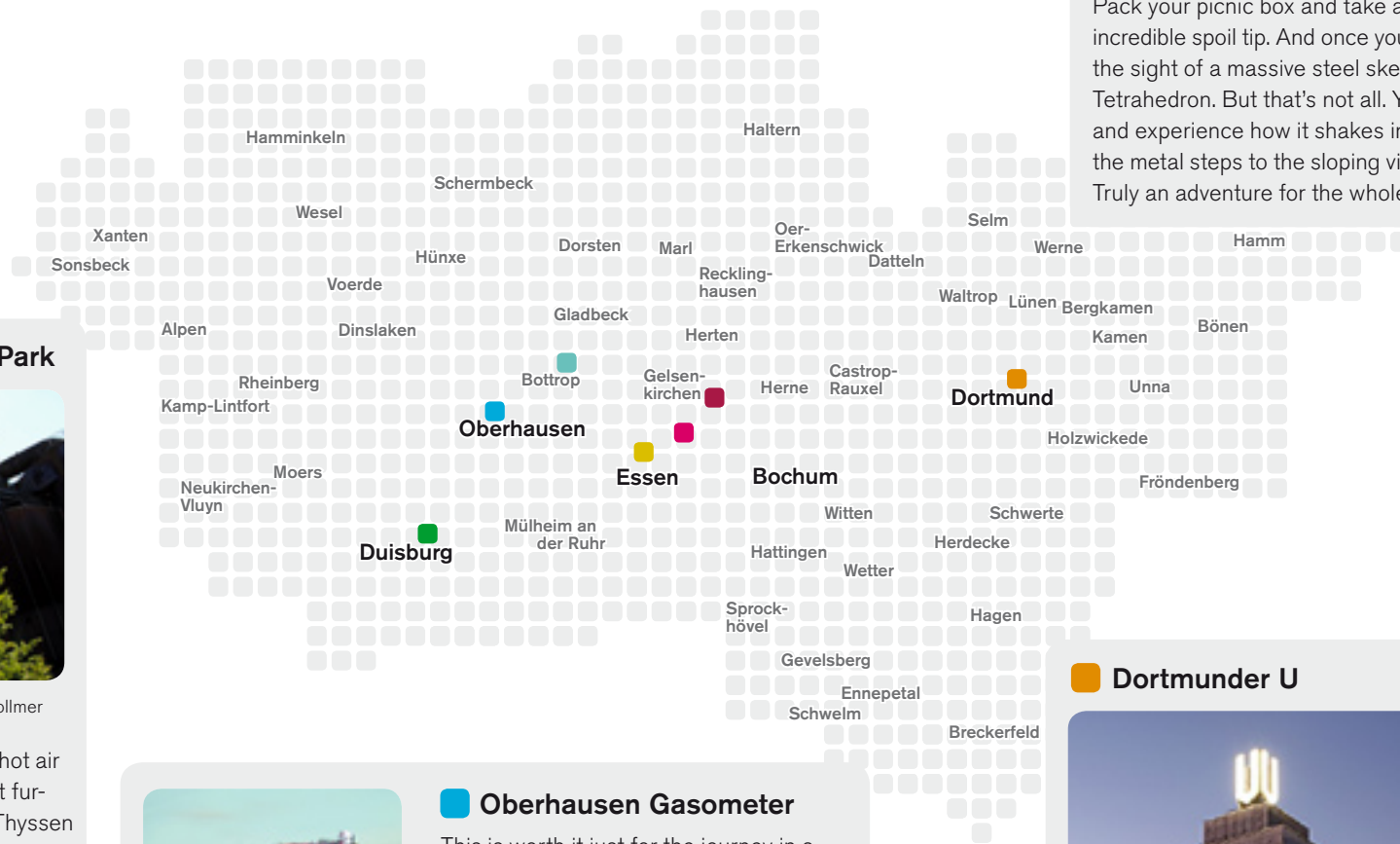
WELCOME HOTEL ESSEN
Schützenbahn 58
D-45127 Essen
Tel. +49 (0)201/1779-0
Fax +49 (0)201/1779-199
info.ess@welcome-hotels.com
www.welcome-hotel-essen.de

WELCOME
HOTELS

7 ways to get high.

At ground level it's impossible to get any idea of the particular structure of the Ruhr Metropolis. But from a birds eye perspective it immediately becomes clear that everything around you has been made by people and machines. The seven following high points reveal what we mean when

we talk about transformation through culture. Nowadays spoil tips have been greened over and old industrial sites have been redeveloped into centres of art, leisure and open-air recreation.

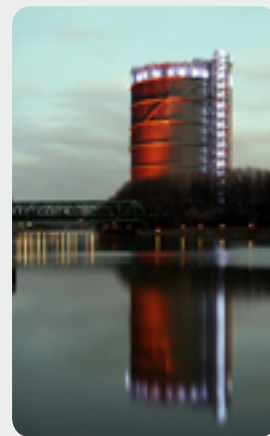


North Duisburg Landscape Park



North Duisburg Landscape Park, Photo: Manfred Vollmer

This is where steel workers used to blow hot air into furnaces. Nowadays if you climb blast furnace number 5 on the site of the former Thyssen works in Duisburg, you are most likely to find your hair being blown all over the place. The view from the platform looks out over Oberhausen and Duisburg and far beyond into the West of the Ruhr and more than compensates for the arduous climb up the many steel steps to the top.



Oberhausen Gasometer, Photo: Michael Stauffenberg

Oberhausen Gasometer

This is worth it just for the journey in a glass lift up the inside wall of the huge Gasometer. Alongside the first-class exhibitions presented here, the Gasometer itself is an acoustic experience. Try singing something and you'll find out why when the place begins to echo. Once you get to the top you will be greeted by a wonderful view of the Rhine-Herne canal and the River Emscher flowing through the neighbouring countryside. It is divided from the Rhine-Herne canal by only a narrow strip of land. This is what islands in the Ruhr look like. So climb into your canoe and get paddling!

Tetrahedron Bottrop



Tetrahedron Bottrop, Photo: Manfred Vollmer

Pack your picnic box and take a stroll to the top of this incredible spoil tip. And once you're there you'll be met with the sight of a massive steel skeletal construction, the Tetrahedron. But that's not all. You can climb it for yourself and experience how it shakes in the wind as you ascend the metal steps to the sloping viewing platforms at the top. Truly an adventure for the whole family!

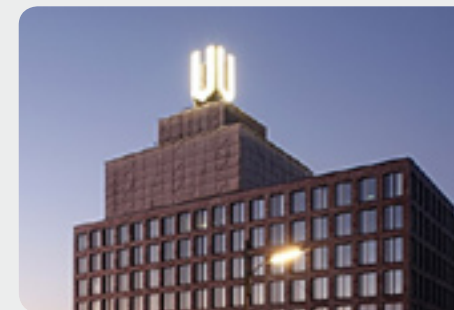
Schurenbach spoil tip and "Slab for the Ruhr"



"Slab for the Ruhr", Essen, Photo: RVR/Reinhold Budde

Once you reach the top you'll be standing on material which used to lie buried below the ground at the Zollverein colliery – after the coal had been sorted from the dead stone, that is. The surface is so bare that you could be forgiven for thinking that you were standing on the surface of the moon. Indeed the massive "Slab for the Ruhr" created by the American artist, Richard Serra, looks as if it might have been left there by visitors from outer space. In the distance you can see the modern skylines of Essen and the Nordstern pit in Gelsenkirchen.

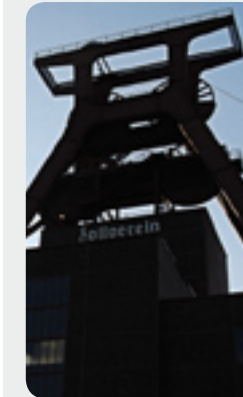
Dortmunder U



Dortmund U, Photo: Thomas Robbin

"U" – a short emblem for a long brewing tradition. The Dortmund "U" towers nine metres above the roof of the old Dortmund Union Brewery in the centre of the city. In 2010 the 70 metre high sign will show visitors the way to the first centre for the creative industries (predominantly music and the media) in the whole of Germany. Not only high, but highly creative.

Zollverein pit



Zollverein pit, Essen Photo: Meike Murawski

The Ruhr without Zollverein is like Rome without the Colosseum – simply inconceivable. From the roof of the 40 metre high coal washing plant it will become only too clear that nothing has remained of the original landscape, and that the hills and valleys in the region have all been created by human intervention. Where can you find that anywhere else in the world?

Nordstern-Tower



Nordstern colliery, Gelsenkirchen Photo: THS Wohnen GmbH

The tower above shaft 2 on the site of the former Nordstern (North Star) colliery is being raised even higher by the addition of four glass fronted levels, and a 25 meter sculpture by Markus Lüpertz. The new glass cube at the top of the tower will contain high-tech screens for video installations and, by contrast, offer great views of the water traffic on the Rhine-Herne canal below. It's all about the right blend!

USEFUL INFORMATION

ON THE ROAD

By air

The main airport for the Cultural Capital is Düsseldorf International, only a few kilometres away from the Ruhr Metropolis, and easy to reach by rail and car. Düsseldorf International is the third largest airport in Germany and has connections to all the other German airports, as well as major cities in Europe and abroad. A thirty-minute train journey on the local Regional Express service (lines RE1, RE3 and RE6) will bring you right into the heart of the Capital of Culture. The RE3, for example, stops near the Zollverein visitor centre. Dortmund airport is also situated in the Ruhr Metropolis and serves a number of other airports within Germany and Europe. The airport express bus will bring you directly to Dortmund Central Station, from where you can easily reach all the other towns and cities in the cultural capital. The Ruhr Metropolis can also be reached in less than an hour from the following airports: Cologne/Bonn, Weeze in the Lower Rhine, and Münster/Osnabrück.

By car

The Ruhr Metropolis is criss-crossed by no less than 10 different motorways. That said, it's not hard to find your way around because even the smaller suburbs often have their own motorway exits.

By rail and bus

The Deutsche Bahn AG (German rail) has an excellent service linking all the major cities in Germany and Europe (incl. Amsterdam, Luxemburg, Zürich, Vienna, Prague and Warsaw) to the Ruhr Metropolis. In addition to local public transport German Rail will be adding car-sharing and call-a-bike facilities to its other customer services, thereby demonstrating its efficiency as the official mobility partner of RUHR.2010. Further infos at: www.bahn.de.

Local transport offers a dense network of routes comprising over 10.000 bus stops and railway stations. Shuttle buses and special trains will be provided for many of the major events during the Capital of Culture year.

Special travel offers to the Capital of Culture will be available from January 2010:

The RUHR.2010 Ticket NRW

48 hours free travel on the public transport network all over North Rhine-Westphalia, including the whole of the Capital of Culture with the added bonus of a huge number of discounts for events and attractions in the Ruhr Metropolis. 48.00 € for two people (plus children under 6)

The RUHR.2010 Ticket

The ticket to the Capital of Culture 48 hours free travel in all the buses and trains within one of the five areas of validity in addition to a huge number of discounts for events and attractions in the Ruhr Metropolis. And all for only 19.00 € p.P. Further information: www.vrr.de

By boat

The River Rhine is the most important inland waterway in the whole of Europe, and a unique network of canals (Wesel-Datteln, Datteln-Hamm, the Rhine-Herne canal and the Dortmund-Ems Canal) means that the Ruhr Metropolis can boast of an attractive network of navigable waterways. Not forgetting the River Ruhr itself which gave its name to the region. You can travel all the waterways on your own boat or canoe or by pleasure boats.

TOURISM

Ruhr Tourismus GmbH

The tourist partner of RUHR.2010, the Ruhr Tourist Authority is the place to go if you have any questions on travelling to – or within – the Cultural Capital. Its staff can give you information and tips on the region, and offer a professional and competent service including complete packages, individual items, accommodation, day trips, guided tours, information leaflets and brochures etc.

Ruhr Tourismus GmbH

Centroallee 261, 46047 Oberhausen
info@ruhr-tourismus.de
www.ruhr-tourismus.de

Brochures and sales articles:

+ 49 (0) 1805 181620*

Accommodation and travel offers:

+ 49 (0) 1805 181610*

Tickets for events: + 49 (0) 1805 181650*

RuhrTOPCard: + 49 (0) 1805 1816180*

(*0,07 € / 30 secs. from the Dt. T-Com land line/, mobile phone calls may differ in price)

RuhrTOPCard

In 2009 and 2010 the RuhrTOPCard will be offering free admission to over 90 leisure and adventure venues in the Ruhr, the Sauerland region and the Lower Rhine. It is your admission ticket to the best zoos, fun baths, pleasure boats, museums and other leisure attractions in the region. Ticket holders can also get reduced admission to a large number of other leisure facilities and events and, in 2010, to selected attractions in the Capital of Culture. More information at: www.ruhrtopcard.de.

INTERNET

RUHR.2010

Up-to-date, comprehensive information on programmes and projects, activities and events of the European Capital of Culture 2010 can be obtained at: www.ruhr2010.de

The Industrial Heritage Trail

Industrial Heritage and History of Culture:
www.route-industriekultur.de

The Ruhr Regional Association

Information on the highlights, events, leisure activities, links and geo-data for the Ruhr Metropolis: www.rvr-online.de

The cultural internet platform for the Ruhr

Detailed information on theatre, opera, museums, events, pop, jazz and classical concerts, plus a regional calendar of events: www.kultur-im-ruhrgebiet.de

KEY

- € admission fee
- H closest stop of public transport
- ♿ barrier-free access

ADDRESSES

ORIENTATION

Visitor centre Bochum

Deutsches Bergbau-Museum
Am Bergbaumuseum 28
44791 Bochum

Visitor centre Dortmund

Dortmund U
Brinkhoffstraße 4, 44137 Dortmund

Visitor centre Duisburg

CityPalais (planned)

Visitor centre Essen

Zeche Zollverein, Kohlenwäsche
Gelsenkirchener Str. 181
45309 Essen

Visitor centre Oberhausen

CentrO/Neue Mitte (planned)

THE FINER SIDE OF LIFE

Alte Synagoge

Steeler Straße 29, 45127 Essen
Phone: +49 (0) 201 8845218
www.alte-synagoge.essen.de

DITIB-Merkez Moschee

Warbruckstr. 51, 47169 Duisburg
Phone: +49 (0) 203 7596460
www.ditib-du.de

Emil Schumacher Museum/ Karl Ernst Osthaus Museum

Hochstr. 71, 58095 Hagen
Phone: +49 (0) 2331 2073135
www.esmh.de, www.keom.de

Landesarchiv NRW

Schifferstraße 30–34
47059 Duisburg

LWL-Industriemuseum

Henrichshütte in Hattingen
Werksstr. 31–33, 45527 Hattingen
Phone: +49 (0) 2324 92470
www.lwl-industriemuseum.de

LWL-Museum für Archäologie Westfälisches Landesmuseum

Europaplatz 1
44623 Herne
Phone: +49 (0) 2323 946280
www.lwl-landesmuseum-herne.de

MKM Museum Küppersmühle für Moderne Kunst

Innenhafen Duisburg
Philosophenweg 55
47051 Duisburg
Phone: +49 (0) 203 30194811
www.museum-kueppersmuehle.de

Museum Folkwang

Bismarckstraße 60
45128 Essen
Phone: +49 (0) 201 8845444
www.museum-folkwang.de

Ruhr Museum

Zeche Zollverein, Kohlenwäsche
Gelsenkirchener Straße 181
45309 Essen
Phone: +49 (0) 201 8845200
www.ruhrmuseum.de

PARTY TIME

Jahrhunderthalle Bochum

An der Jahrhunderthalle 1
44793 Bochum
Phone: +49 (0) 234 36930
www.jahrhunderthalle-bochum.de

VELTINS-Arena

Arenaring 1
45891 Gelsenkirchen
www.veltins-arena.de

ALL THE RUHR'S A STAGE

Konzerthaus Dortmund GmbH

Brückstr. 21
44135 Dortmund
Phone: +49 (0) 231 226960
www.konzerthaus-dortmund.de

Kraftzentrale im Landschaftspark Duisburg-Nord

Tour-de-Ruhr visitor centre
Emscherstraße 71
47137 Duisburg
Phone: +49 (0) 203 4291942
www.landschaftspark.de

Ruhrtriennale/Kultur Ruhr GmbH

Leithestraße 35
45886 Gelsenkirchen
Phone: +49 (0) 209 1671700
www.ruhrtriennale.de

Schauspiel Essen

Il. Hagen 2
45127 Essen
Phone: +49 (0) 201 8122391
www.theater-essen.de

Schauspielhaus Bochum

Königsallee 15
44789 Bochum
Phone: +49 (0) 234 33330
www.schauspielhausbochum.de

Schlosstheater Moers GmbH

Kastell 6
47441 Moers
Phone: +49 (0) 2841 201730
www.schlosstheater-moers.de

Theater an der Ruhr GmbH

Akazienallee 61
45478 Mülheim an der Ruhr
Phone: +49 (0) 208 599010
www.theater-an-der-ruhr.de

Theater Dortmund

Kuhstraße 12
44137 Dortmund
Phone: +49 (0) 231 5025547
www.theaterdo.de

Theater Oberhausen

Will-Quadflieg-Platz 1
46045 Oberhausen
Phone: +49 (0) 208 8578184
www.theater-oberhausen.de

EXPERIENCE ART

Biennale f. Internationale Licht- kunst gemeinnützige GmbH i.Gr.

Hellweg 33–35, Breitenbach-
gelände/Gebäude 17, 59423 Unna
Phone: +49 (0) 172 2163718
www.biennale-lichtkunst.com

Ruhr-Atoll/Kultur-Konzept-GmbH

Ruhrtalstraße 19a, 45219 Essen
Phone: +49 (0) 201 4377280
www.ruhr-atoll.de

HIGHPOINTS

Dortmunder U

Brinkhoffstraße 4, 44137 Dortmund

Gasometer Oberhausen

Arenastraße 11, 46047 Oberhausen
Phone: +49 (0) 208 8503730
www.gasometer.de

Haldenereignis Emscherblick mit Tetraeder

Beckstraße, 46238 Bottrop

Halde Schurenbach mit der „Bramme für das Ruhrgebiet“

Nordsternstraße
45329 Essen-Altenessen

Landschaftspark Duisburg-Nord

Emscherstraße 71, 47137 Duisburg
Phone: +49 (0) 203 4291942
www.landschaftspark.de

Nordsterturm im Nordsternpark

Am Bugapark
45899 Gelsenkirchen
www.nordsternpark.info

Zeche Zollverein

Gelsenkirchener Str. 181
45309 Essen
Phone: +49 (0) 201 246810
www.zollverein.de

Credits

Editor

RUHR.2010 GmbH
„Essen for the Ruhr“

Managing Directors

Dr. h.c. Fritz Pleitgen (Chairman)
Prof. Dr. Oliver Scheytt
Chairman of the Board of Directors:
Dr. Wulf H. Bernotat

Artistic Directors

Prof. Dieter Gorny
Prof. Karl-Heinz Petzinka
Aslı Sevindim
Steven Sloane

Design

KNSK Werbeagentur GmbH, Hamburg

Editorial Services

Marketing & Communication Directors:
Dr. Julia Frohne, Katharina Langsch
Concept: Christoph Lottritz
Coordination: Jessica Lehmann
Picture editor: Melanie Kemner
Text editor: Nadja Grizzo
Translation: Roy Kift

Print

Bonifatius GmbH, Paderborn

Contact

RUHR.2010 GmbH, Brunnenstraße 8,
D 45128 Essen, +49 (0) 201 888 2010
info@ruhr2010.de, www.ruhr2010.de

as of February 2009

Shareholders and Public Sponsors



Main Sponsors



Partner Sponsors



Promoters

apano GmbH
DZE Druckzentrum Essen GmbH

Official legal consultant

SCHMIDT, VON DER OSTEN & HUBER

> **DORTMUND „U“ TOWER**
CENTRE OF ART AND CREATIVITY
AS FROM MAY 2010

> **EXHIBITIONS IN THE OSTWALL MUSEUM**
AS FROM MAY 2010

> **ISEA 2010**
The most spectacular Media Art festival worldwide will take place for the first time in Germany with exhibitions, performances and artist's presentations.
20TH TO 29TH AUGUST 2010

> **„VOKALKLANG“ MUSIC FESTIVAL**
The new and internationally recognised Dortmund Music Festival shows a many faceted variety of vocal music from all over the world.
27TH MAY TO 6TH JUNE 2010

> **ODYSSEY EUROPE**
Dortmund Playhouse Homer's „Odyssey“ is the leitmotif of the first major joint project of all Playhouses in the Ruhr Area.
27TH FEBRUARY TO MAY 2010

> **SCENE HUNGARY IN NRW 2010**
This festival presents from different perspectives the young and innovative art of the guest country Hungary.
APRIL TO JUNE 2010

> www.ruhr2010.dortmund.de
> www.dortmund-tourismus.de

Dortmund's Tourist Information directly opposite the main railway station provides you with tickets, hotel reservations, information:
Tel.: +49 (0)231 18 999-0,
E-Mail: info@dortmund-tourismus.de
From January 2010 onwards you will get these services in the Ruhr Visitor Centre nearby the Dortmund „U“ Tower as well.

